

5 Kody street Goonellabah

Table of Contents

- | [Property Details](#)
- | [Photo Gallery](#)
- | [Map](#)
- | [Contact For Inspection](#)

Property Details

5 Kody Street, Goonellabah



SOLD BY THE WAL MURRAY TEAM

5  2  2 

Discover this expansive 5 bedroom home in Goonellabah, positioned at the end of a cul-de-sac street and backing on to a public reserve. This quiet location is the perfect place for the large family, within 2.5km to Kadina High School, sporting fields, sports centre (GSAC), shopping centre and local parks.

The home features 3 spacious living areas - formal lounge, open plan living/dining area plus family/media room. Plenty of space for the whole family to enjoy, with multiple spaces for TV's, gym equipment or room for kids

gaming/entertaining. The open plan living has high raked ceilings and flows outside through sliding doors to the alfresco paved patio. Perfect for the family gatherings, BBQ's or outdoor space to relax.

All 5 bedrooms are spacious and include built-in robes. The main bedroom has walk-in robe plus ensuite, with the main bathroom having bath plus shower, with separate toilet.

The home is set out on a large block ♦ 832m², with access to side to park a van/trailer/boat. Being a large block, the property has room for the future pool.

Currently vacant, the home is ready for you to move straight in. Call today to arrange your inspection.

- 5 Bedrooms
- 2 Bathrooms
- 2 Garages
- 1 Ensuite
- Remote Garage
- Built In Robes
- Dishwasher

\$885,000

Photo Gallery





first national
Wal Murray & Co



first national
Wal Murray & Co



first national
Wal Murray & Co



first national
Wal Murray & Co



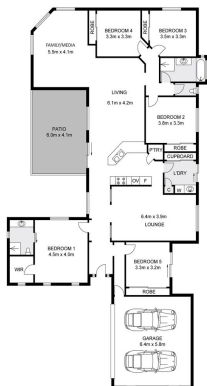
Boundary is a guide only

first national
Wal Murray & Co



Boundary is a guide only

first national
Wal Murray & Co



SITE PLAN

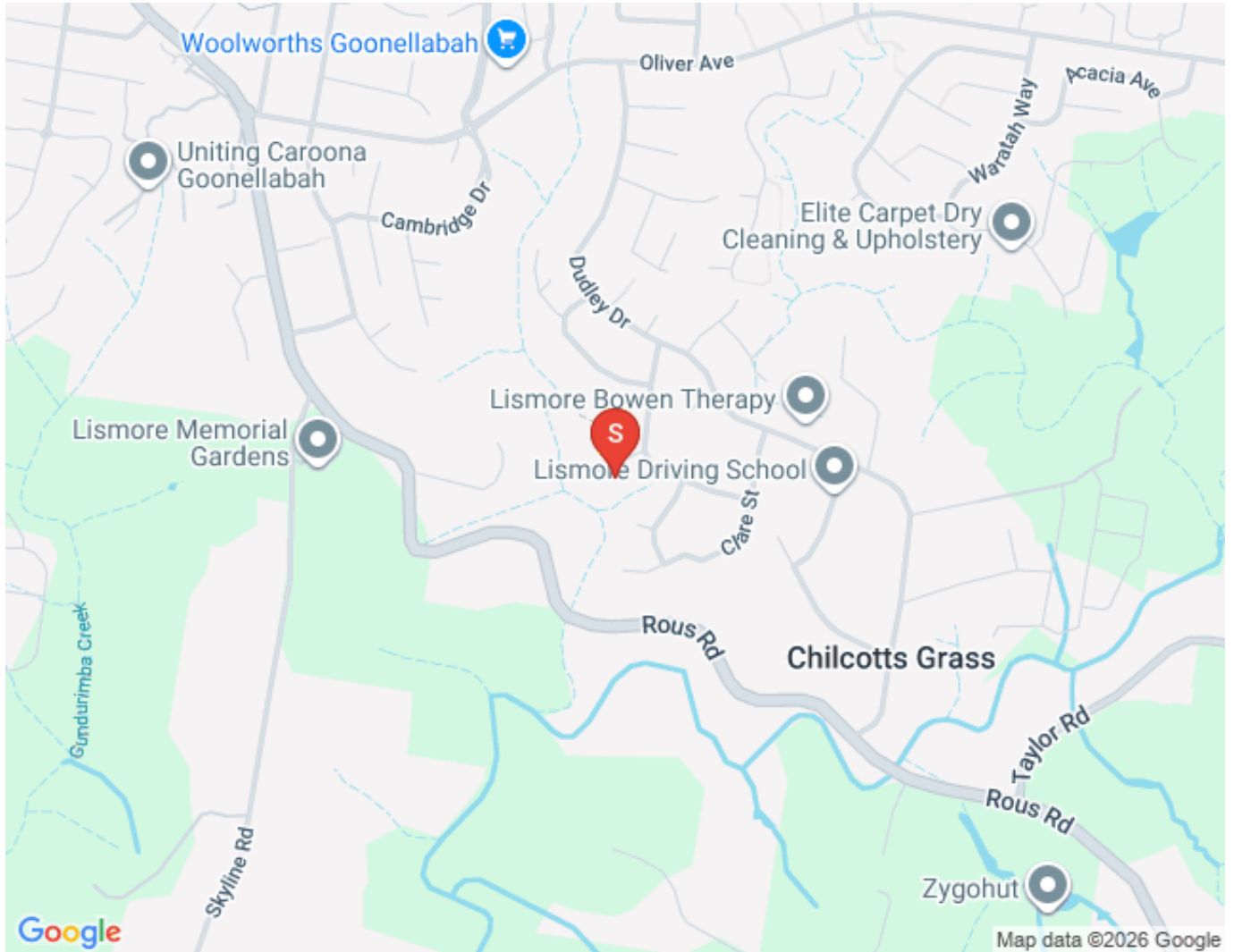
INT : 204.6m²
EXT : 24.6m²
GARAGE : 37.1m²



5 Kody Street, Goonellabah

Dimensions are approximate. All information contained herein gathered from sources we believe to be reliable. However we cannot guarantee its accuracy and interested persons should rely on their own enquiries © visionmedia vision 2024.

Map



Contact For Inspection



BENJAMIN CONTE

LICENSED REAL ESTATE AGENT

0408 368 913

ben@walmurray.com.au